



RIVER TAWE CRUISES

River Trips include "Floating Classroom" for
Schools and Community Use.

Discover Swansea's unique heritage

General Public Trips Corporate hospitality events

Bookings for private functions, engagements,
birthdays and weddings etc.

Licensed for 50

Hot and Cold drinks available.

Toilets Available



Contact Tel No.

Wayne on 07785347549 or

01792 844141

Www.scbt.org.uk



All safety equipment carried.

The Skipper is qualified MCA Boatmaster



**Swansea Community
Boat Trust**



COPPEROPOLIS SWANSEA



From the earliest times, ships moored at quays along the river bank. Swansea Castle was built in the 14th century to protect the port. Sea going ships could follow the river inland to load coal. The history of the navigation is the story of Swansea itself. Discover how the Tawe River navigation helped create Copperopolis, one of the greatest industrial powerhouses that the world has ever known.

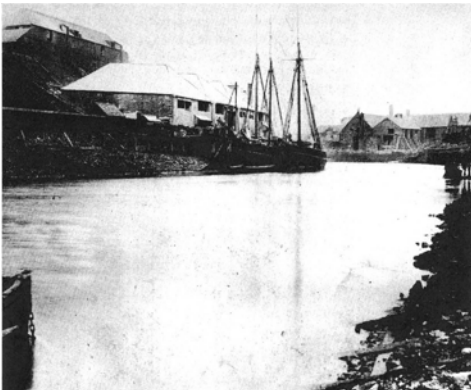
The Hafod Copperworks was established by John Vivian in 1820. The Vivians owned copper mines and small copperworks in Cornwall, but came to Swansea because of readily available cheap coal. Vivian town Hafod was built to house the workers.

The wages at the works were good and this brought many workers to Swansea. In 1848, the works employed 500 men and 500 women and children.

Why did the Copper Industry develop at Swansea.

It took 3 tons of coal to smelt 1 ton of copper ore, so it was more economic to site the copper works at Swansea near the Coal Mines.

At one time, over 90% of the World's copper came from Swansea.





THE RIVER ROUTE

TRIP DURATION
= 2 HOURS APPROX.

Leave the Swansea Museum Pontoon, Travel through the swing bridge into Swansea Marina Lock. Once through the lock we proceed upriver past the Swansea Yacht and Sub Aqua Club Marina and under the sail bridge opposite Sainsburys.

The Swansea community boat will then go under the 2 road bridges and travel past the old Cambrian Pottery works site. Continuing the cruise we travel past the New Belway development towards the Scenic approach to the historic copper work site. Past White Rock the river changes direction and travels underneath the White Rock road bridge and the Barrett Ipad development to reach our cruise limit downstream of the historic Bascule Bridge at Morfa retail park, we then turn around and return on our journey back to Swansea Marina.

Wildlife to be seen
Otters, Foxes, Salmon, Sewin, Bass, Mullet. Ganets, Herons, Wagtails, Kingfishers.

TARIFF (Valid until 1st April 2012)

2 HOUR	Adult	£7
Walk on Cruise	Child over 5 under 16	£4
	Under 5	(free)
	Senior (over 60)	£5
	2 adults +2 children	£18
	2 adults + 3 children	£20
2 HOUR	Up to 25 persons	£150
Boat Charter	25 to 50 persons (price per extra individual over 25)	£5
	Coalfield Trust Schools and Groups (under 25 persons)	£50
	Coalfield Trust Schools and Groups (per individual over 25)	£2
	Schools and Voluntary Groups with no paid staff (under 25 persons)	£75
	Schools and Voluntary Groups with no paid staff (per individual over 25)	£3
	Voluntary Groups (paid staff), small businesses (under 25 persons)	£90
	Voluntary Groups (paid staff), small businesses (per individual over 25)	£3.50
	Professional Associations and Local Authority Groups (under 25 persons)	£105
	Professional Associations and Local Authority Groups (per individual over 25)	£4
4 HOUR	Full Charter (Monday–Friday)	£500
Boat Charter	Full Charter (Saturday–Sunday)	£550
	Schools and Voluntary Groups with no paid staff	£250
	Voluntary Groups (paid staff), small businesses	£300
	Professional Associations and Local Authority Groups	£350
4 HOUR	In–Situ Charter	£200
8 HOUR	In–Situ Charter	£350



DIRECTIONS

From the bus station follow the signs to Swansea Leisure Centre Car Park (LC2). Walk a short distance to the National Waterfront Museum. The Swansea Community boat is moored alongside the Red Helwick Lightship on the Swansea Museum pontoon.



This project has been part-funded by the European Regional Development Fund through the Welsh Government.



the coalfields
regeneration trust

